

---

# **Triple Plus+** **Triple Plus+ IR**

---

## **User Manual**

**M07701**

February 2010  
Issue 4a

 **CROWCON**  
Gas Detection You Can Trust

## Safety information:

**WARNING – Do not change the battery in a flammable atmosphere.**

**WARNING – Substitution of components may impair intrinsic safety.**

**WARNING – Read the instruction manual before use.**

### Instructions specific for use in hazardous areas

The following instructions apply to equipment covered by certificate numbers:

Sira 02ATEX2176X

IECEx SIR06.0084X

The following information covers all relevant points listed in clause 1.0.6 of the EHSR's of the ATEX directive and IECEx Assessment.

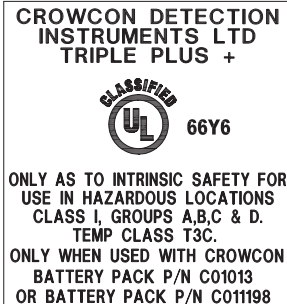
The certification markings are as follows:



1. The equipment is Category 2G and may be used in zones 1 and 2 with flammable gases and vapours with apparatus groups IIA, IIB & IIC and with temperature classes T1, T2, T3 and T4.
2. The equipment is only certified for use in ambient temperatures in the range -20°C to +50°C and should not be used outside this range.
3. Use only battery pack supplied by Crowcon. Charging is only permitted in the non-hazardous area. DO NOT CHARGE IN HAZARDOUS AREA.
4. The equipment has not been assessed as a safety-related device (as referred to by Directive 94/9/EC Annex II, clause 1.5 and IEC Certification Scheme for Explosive Atmospheres).
5. Repair of this equipment shall be carried out by the manufacturer or in accordance with the applicable approvals regulations.

**Crowcon Detection Instruments Ltd**  
**2 Blacklands Way, Abingdon**  
**OX14 1DY UK**  
Tel. +44 (0)1235 557700  
Fax. +44 (0)1235 557749  
[www.crowcon.com](http://www.crowcon.com)  
Email: [sales@crowcon.com](mailto:sales@crowcon.com)

© Copyright Crowcon Detection Instruments Ltd 2010.  
All rights are reserved. No part of the document may be photocopied, reproduced, or translated to another language without the prior written consent of Crowcon Detection Instruments Ltd.  
Publication number: M07701



# CALIBRATION CERTIFICATE

## INSTRUMENT DETAILS

SERIAL NO.

UL CLASSIFIED

CERTIFICATE NO. **SIRA 02ATEX2176X**

 II 2G: Ex ib d IIC T4 Gb

TYPE MONO

DUAL

TRIPLE

QUADRUPLE

- FLAMMABLE GAS CHANNEL  
0-100% LEL METHANE  
ALARM SETTINGS                    %LEL/                    %LEL /                    %LEL
- OXYGEN CHANNEL  
0-25%/                    %  
ALARM SETTINGS                    19%/                    %/23.5%/                    %/                    %
- HYDROGEN SULPHIDE CHANNEL  
0-50 ppm/                    ppm  
ALARM SETTINGS  
INSTANTANEOUS                    5ppm/                    ppm/                    ppm/                    ppm  
15 MIN TWA                    10ppm/                    ppm  
8 HR TWA                    5ppm/                    ppm
- CARBON MONOXIDE CHANNEL  
0-500ppm/                    ppm  
ALARM SETTINGS  
INSTANTANEOUS                    30ppm/                    ppm/                    ppm/                    ppm  
15 MIN TWA                    200ppm/                    ppm  
8 HR TWA                    30ppm/                    ppm
- Special Version

CHANNEL	GAS	RANGE	ALARM SETTINGS		
			INSTANTANEOUS	15 MIN TWA	8 HR TWA

TEST ENGINEER                    /                    /

CROWCON EQUIPMENT IS TESTED AND CALIBRATED IN ACCORDANCE WITH PROCEDURES REFERRED TO IN CROWCON'S **LRQA** VALIDATED QUALITY MANUAL, GUARANTEEING CALIBRATION TO ISO9000 STANDARDS OF RELIABILITY AND REPEATABILITY. STANDARD CALIBRATION GAS MIXTURES HAVE BEEN PREPARED IN ACCORDANCE WITH **ISO9001:2008**.

---

# Contents

---

Quickstart Guide.....	1
I. General Description .....	2
II. Operation .....	4
2.1 Switch On.....	4
2.2 Display.....	5
2.3 Overrange.....	6
2.4 Cautions.....	6
2.5 Backlight.....	6
2.6 Alarms.....	6
2.7 Status Screens/Alarm Reset .....	7
2.8 Switching Off.....	7
III. Setting Up .....	8
3.1 Using the Menu system.....	8
3.2 Configuration Options .....	10
3.3 Quickcal.....	15
3.4 Pellistor saving (Triple Plus+ only).....	15
3.5 Configuring The Instrument With Portables PC .....	16
IV. Battery Charging.....	18
V. Data Logging .....	20
VI. Troubleshooting Guide.....	21
VII. Maintenance and Calibration .....	22
7.1 Recalibrating.....	22
7.2 Replacing the Lead-Acid Battery Pack.....	22
7.3 Fitting the Lithium-ion Battery Pack.....	23
7.4 Replacing a sensor module.....	23
7.5 Back-up memory.....	23
VIII. Limitations of Use .....	24
IX. Accessories and spares.....	25
Appendix 1 – Pumped version (optional).....	27
Appendix 2 – Default Flammable Correction Factors.....	28
Appendix 3 – Front Panel Text Items .....	29
Appendix 4 – Sensor Limitations.....	31
Appendix 5 – Menu Map.....	32

**Technical update February 2010**

Significant changes have been made to sections: Quick Start Guide, I, II, IV, VI, VII, IX, Appendix 1 since last version Issue 2. Experienced users should review these sections for an update on functionality.

---

# Quickstart Guide

---

**Prior to first use, the LIBRA Lithium-ion battery pack requires a full 12-hour charge cycle. This will ensure the life of the new battery.**

## Turn ON

Press ON, press the UNMARKED button to reset alarm, green LED flashes and display will show gas levels or display 'MONITORING' if the instrument is in the GO/NO-GO mode (see SETTING UP).

## In Alarm condition

Alarm sounds and the red LEDs flash. Press the UNMARKED button to silence the sounder, the red LED will continue to flash if gas is present.

**Gas display mode:** 'ALARM' flashes next to the hazardous gas name.

**GO/NO-GO mode:** display reads 'GAS HAZARD, EVACUATE AREA'.

**Instantaneous and TWA alarms:** Alarm is triggered when the instantaneous threshold is reached. Press the UNMARKED button to silence the sounder, the red LEDs will continue to flash if gas is present. The sounder will be triggered again if a new alarm threshold is reached.

**Low battery:** Alarm will sound when battery is low. Press 'user accept'.

## Reset Alarm

Press the UNMARKED button.

## Turn On Backlight

Press the BACKLIGHT button. It stays on for 30 minutes unless the button is pressed again.

## Battery Low

Green LED flashes quickly, the sounder frequency increases and a warning is flashed on the display. Use cradle charger/interface unit to charge the unit (5 hours for a full charge for lead-acid, 8 hours for Li-ion).

## Calibration/Setting up

Pressing 'CAL' and entering a password enables the instrument to be recalibrated and to change its operating modes and configuration.

## Use Of Bulb Sampling Aspirator

Locate flowhead under lip above sensor apertures and secure with the two half-turn fasteners. Squeeze bulb once every second to obtain the required flow rate of 0.5 litre/min.

---

# I. General Description

---

## Triple Plus+

The Crowcon Triple Plus+ is a microprocessor controlled portable gas detector which is capable of monitoring up to four gas types simultaneously and providing warning of hazardous levels. Using electrochemical, catalytic and thermal conductivity sensors, the instrument may be configured to detect any practical combination of oxygen, toxic and flammable gas. See Appendix 4 for notes on sensor limitations.

The built in data logging facility records gas levels of all four channels. The user can choose the intervals at which subsequent readings are taken. They can then be downloaded to a computer. In this way, a detailed evaluation of logged readings of accumulated exposure can be made (see section 5). The user can then monitor patterns of gas leaks and so provide essential information to an incident inquest.

The three part injection moulded TRIAX case is light yet durable and resistant to water and dust. It houses a digital electronic circuit board, up to four sensor modules, a piezo-electric alarm sounder and a power supply board which restricts available current to the rest of the instrument and so ensures intrinsic safety. The battery type is chargeable lead-acid which is accessible via an external hatch to permit easy replacement and maximum instrument usage, but it is more likely that the facility to recharge the instrument with the battery pack *in situ* will be used. Crowcon have recently introduced the Lithium-ion rechargeable battery pack, which offers superior performance over lead-acid batteries. If your detector is not fitted with this new option, please contact your local agent for details. The top panel incorporates a backlit liquid crystal alphanumeric display on which gas levels and instrument messages appear, four embossed tactile push-buttons to control instrument functions, a small green LED which flashes periodically to confirm operation and a large high intensity red LED which flashes when an alarm condition is encountered. Additionally, the top panel includes two small windows through which the instrument sends infrared signals when it is located in its dedicated Charger/Interface unit.

## Triple Plus+ IR

Triple Plus+ IR is a specific version of the Triple Plus+ utilising an infrared sensor for the detection and measurement of hydrocarbons, in place of the conventional pellistor sensor. Using infrared technology in place of pellistor technology has a number of advantages as follows:

- (a) No requirement for oxygen in the background gas i.e. operation in inert backgrounds

- (b) No damage caused by exposure to high gas concentrations
- (c) No poisoning effects
- (d) Ability to measure at % volume levels as well as %LEL
- (e) Fail safe

It must be remembered however that an infrared hydrocarbon sensor will have no response to hydrogen and is therefore unsuitable for use where hydrogen forms a significant part of any potential flammable risk. In order to ensure ready identification of Triple Plus+ IR the membrane switch assembly is yellow in place of the normal orange and carries the name designation 'Triple Plus+ IR'.

The infrared sensor module in Triple Plus+ IR will be supplied with a calibration for one of four hydrocarbon species i.e. methane, propane, butane or ethylene. This calibration is factory set. Whatever the calibrated species the infrared sensor will respond to any hydrocarbon present, but with differences of response to different species. However unlike for a pellistor sensor it is not possible to assign simple correction factors, as the basic relationship between concentration and response of the detector is not linear. An infrared sensor should therefore always be calibrated for the species to be determined or a suitable target. If other specific hydrocarbon species need to be detected, please consult Crowcon as to the optimum calibration.

The infrared sensor in Triple Plus+ IR can be supplied on one of two configurations as follows:

- **Single range %LEL**

In this case the Triple Plus+ IR can have up to three other sensors from the standard range of toxic and oxygen sensor modules available.

- **Dual range %LEL and % volume**

In this case the sensor module has a second ribbon connector on a side-piece of PCB, and therefore takes up two display positions on Triple Plus+ IR. This allows only two other sensor modules from the toxic and oxygen range to be used. A dual range sensor will always have both ranges calibrated for the same species, and operates in an auto-ranging mode displaying in %LEL terms with no numerical display for % volume until the level of gas exceeds 100%LEL, and in volume terms with no numerical value for %LEL when the level of gas is above 100%LEL. Note also the lower range will always display as %LEL even if the gas is detected in an inert background gas where strictly speaking the mixture cannot be explosive. The display indicates the equivalent %LEL level if the gas were in an air background.

**Note:** It is not possible to have a pellistor or thermal conductivity sensor in a Triple Plus+ IR.

---

## II. Operation

---

### 2.1 Switch On

Press the 'ON' button to switch on the Triple Plus+/Plus+ IR. The instrument will display the message 'Crowcon Triple Plus+/Plus+ IR' and the serial number. The unit will test the red alarm LED, sounder and alarm beacons. Press the UNMARKED button to silence the alarm. Note: if the unit is in the presence of a hazardous gas the alarm will continue to operate. If alarms are configured to mute (see MUTE in section 3.2, Configuration Options) then the alarm will not sound and the alarm LED not flash during the switch on process.

After a short pause the display will change to 'Testing System...' and display the current battery voltage. If the current date is past a preset calibration due date, then the instrument will display 'Calibration Due'. See section 3.2 for configuration options. If there are different sensor modules in the instrument compared to when it was last used (possibly indicating sensor failure) the message 'Sensors changed?' will be displayed. If the instrument's configuration has been lost or corrupted, then the message 'Loading default data' will be displayed. With all three of these error/warning messages, the condition must be accepted by pressing the UNMARKED button, indicated on the display with the word CONTINUE above it.

The instrument can alarm on instantaneous gas levels, and on both short and long term Time Weighted Average (TWA) gas exposure levels. Note that the Time Weighted Average toxic gas exposures are reset to zero when the instrument is switched off.

A well charged battery will cause the display to indicate in excess of 5.8 V; it is considered flat at 5.0 V. Below 5.3 V a operational instrument will display a low battery warning; an 'off' instrument will not switch on.

About 5 seconds after the instrument is switched on, the Triple Plus+/Plus+ IR will complete its self-tests and indicate the current gas levels.

If the instrument enters an alarm condition then the sounder will be triggered and the alarm LEDs will flash. Once the gas levels are below alarm levels (i.e. safe gas levels), the alarm warning may be switched off by pressing the UNMARKED button. If alarms are muted the red alarm LED will not flash nor will the alarm sounder sound when the instrument is in alarm - the only indication of the alarm condition will be the word 'ALARM' alternately flashing with the gas value of the channel in alarm.



## 2.2 Display

The information on the display is dependent on the type of sensors installed in the instrument. For each sensor module installed, the display indicates the gas concentration, the units of measurement (e.g. ppm) and the channel name (e.g. H<sub>2</sub>S). (Each sensor module contains analogue circuitry to support the sensor and a small digital memory which identifies it to the processor along with calibration data and alarm thresholds.) A quarter of the screen is reserved for each of a possible 4 gas channels, which means that in the popular 'triple' gas configuration one quadrant is left blank. It is often useful to know how the location of the sensor modules relates to the display. When viewing the instrument from the top with the sensor grilles facing away, reading the display from left to right like a book shows the location of the sensors installed from left to right along the front face. The normal mode of operation is diffusion monitoring whereby the instrument constantly samples air in its immediate vicinity.

### *Display options*

The instrument may be configured into alternative display modes, by the DISPY option (see DISPY in section 3.2, Configuration Options). The ON button can be programmed to switch between modes.

The possible display modes are:

**Normal:** All gas values, units and names are displayed in real time

**Average:** The average gas reading since the instrument was switched on is displayed for toxic sensors. This is indicated by flashing 'avg' with the sensor name. Non-toxic sensors will display their normal gas level.

**Off:** Display reads 'MONITORING' whilst a safe condition is perceived, and flashes 'GAS HAZARD and EVACUATE AREA 'in alarm condition.

**TWA Toxic:** This display mode only affects toxic sensors, and is indicated by the letters 'TWA' flashing with the sensor name. The gas value displayed will be the current long-term exposure level. Non-toxic gas sensors will display their normal gas level.

**Peak hold:** This options affects the displayed gas value for all sensors, and is indicated by the letters 'pk' flashing with the sensor name. The highest gas level that has been read since instrument switch on will be displayed, or in the case of oxygen, the lowest level read. The peak that has been retained may be reset to the current gas

level by pressing the UNMARKED button. The peak gas level will then be displayed again from then on.

In addition to the messages described above, if alarms are muted the message 'MUTED' will flash with the sensor name and units.

## 2.3 Overrange

If a flammable sensor's signal is out of range then the instrument may be configured, via a PC and the *Portables PC software*, to either flash the relevant numbers on the display, or to display a message of the form 'SENSOR FAILURE' and the name of the failed sensor. The alarm sounder will activate. This type of error could indicate a high gas level or sensor failure. Calibration should be checked after such a warning.

## 2.4 Cautions

Sensors may be adversely affected by exposure to silicones, lead compounds, high levels of hydrogen sulphide and chlorine, and some industrial solvents.

A condition of certification is that the instrument is not used with ethyl nitrate vapours, or in hazardous areas containing IIC gases (e.g. hydrogen, acetylene) where the risk of mechanical damage to the enclosure is high.

## 2.5 Backlight

In low ambient light conditions, the backlight can be activated to illuminate the display by pressing the BACKLIGHT button. To switch off the backlight press the BACKLIGHT button again, or it will turn off automatically after a configurable timeout period of 10, 20 or 30 minutes. Alternatively, the backlight may be configured to remain on permanently, or to never timeout once switched on. (See LIGHT in section 3.2, Configuration Options). In an alarm condition, the backlight is automatically turned on.

## 2.6 Alarms

When the Triple Plus+/Plus+ IR encounters an alarm condition the red lights flash, the beacons activate and the sounder emits a loud, fast bleep. Where permitted instantaneous toxic gas alarms may be accepted by pressing the UNMARKED button. In this case, the sounder is silenced but the red lights continue to flash. With instantaneous alarms, the word 'ALARM' will flash next to the gas name. Time Weighted Average exposure limit alarms will flash

the whole display with the warning. All instantaneous alarm types are latching which means that they may only be reset by pressing the UNMARKED button when the gas hazard has passed. If set up for Time Weighted Average (TWA) alarms, the Triple Plus+/Plus+ IR triggers a non-resettable alarm if a short term (normally 15 minute) or long term (8 hour) exposure level is reached. Both TWA alarm types may only be reset by turning the instrument off and on again when the average exposure has fallen below threshold levels. (See Configuring the instrument with *Portables PC software* on setting these levels).

## 2.7 Status Screens/Alarm Reset

The UNMARKED button has two functions: to reset alarms (see 3.6 above) or to display a series of status screens. To view the status screens press the UNMARKED button when the instrument is not in an alarm condition.

The series of status screens show the following information in sequence. Press the UNMARKED button to move onto the next screen, and eventually back to the main instrument display of gas levels. If the button is not pressed for 20 seconds the instrument will 'timeout' and return to the main gas reading screen.

The date, current time, and the time elapsed since instrument switch on is displayed.

Serial number and calibration due date is displayed.

Alarm 1 levels are shown for all sensors.

Short-term exposure levels are displayed for toxic sensors.

Long-term exposure levels are displayed for toxic sensors.

Currently selected user and site are displayed.

## 2.8 Switching Off

Provided the facility has not been denied with the SETTING UP function, the Triple Plus+/Plus+ IR may be switched off by pressing the 'ON' button and the UNMARKED button simultaneously and holding them down for about half a second. This prevents accidental switch off through knocking the keypad.

## III. Setting Up

The Triple Plus+/Plus+ IR has been designed to display as much or as little information to the user as is required by the controller of the equipment. On the one hand it is a four channel measuring instrument with continuous readout, on the other, a basic alarm only detector with status display and no way of switching it off. This section describes how to tailor the instrument to the application via the front panel buttons. The section on Configuring the instrument with *Portables PC software* details other adjustments that may be made to the instrument.

### 3.1 Using the Menu system

To access the SETUP menu press 'CAL' button. The screen will display the following:

```
MENU EVENT LOG
<<   >>   QUIT   LOG
```

The four buttons have above them a symbol or word: these are the 'soft key' functions currently assigned to that particular key. Use the ON and BACKLIGHT buttons to scroll left and right, the CAL button to quit the menu system and the UNMARKED button to select a menu option. View the road map on page 31 for details of Triple Plus+ configuration menu system.

The options available are:

- MENU** This selects the configuration menu. It is password protected, and described below
- EVENT** This marks an event in the data log. There is no menu beneath this option.
- LOG** This selects the log menu, described below.

#### How to enter the configuration Menu

Use the scroll buttons to select the MENU item and press the UNMARKED button. The screen will display 'Password?' Press the buttons in the following sequence within 5 seconds to enter the default password: ON, BACKLIGHT, CAL and UNMARKED. This password can be changed via a PC using *Portables PC software*.

## How to change an option

To change an option, use the first two keys, labelled with the << and >> symbols, to change the current selection, and the third key (labelled QUIT) to finish changing the selection. If the QUIT key is pressed and the parameter has been modified then the user is prompted with a save changes message. Two keys are soft key function labelled, one with YES and one with NO. Press the desired button.

For example, to configure the start-up option, from the configuration Menu follow the steps below:

```
DISPY ALARM ZERO PUMP
<<    >>    QUIT  PUMP
```

Scroll the menu list to the left until START is selected.

```
ALARM ZERO PUMP START
<<    >>    QUIT  START
```

Press the UNMARKED button to enter the START submenu.

```
START: ZERO & LOG
<<    >>    QUIT
```

Use the << and >> buttons to scroll through options (Section 3.2). Press QUIT to select option and quit menu.

```
Save the changes?
YES                                NO
```

Press the first button to save the change and move the menu back up a level, and the last key to leave the selection as it was (unchanged) and move back up a level.

The menu system has timeouts on all operations. If no keys are pressed within about 20 seconds the system steps back one level at a time. Changes that have been accepted by pressing YES to the save changes prompt are retained. Any change that has not been explicitly saved will be lost.

The following parameters are modifiable via the instrument front panel buttons, and are displayed on the screen in the following order:

```
ZERO FLAMM LEVEL PUMP CALIB DISPY ALARM START BUTTN TIME
OFF LIGHT
```

## 3.2 Configuration Options

### LIGHT:

Configures the backlight timeout option to be *NEVER TIMEOUT*, *10 MINS.*, *20 MINS.*, *30 MINS.*, or *ALWAYS ON*. Whatever option is selected, the backlight will always come on when the instrument is in alarm.

### DISPY

**Display mode.** Configures the instrument display mode, with one of the following options: *Normal*, *Average*, *Off*, *TWA Toxic*, *Peak Hold*. These are described in the section III Operation. **Note:** the action of the BUTTN option below.

### ALARM

**Alarm mode.** User can select one of the following: *ALL ACTIVE*, *TWA ONLY*, *INSTANT*.

Within this option, the instrument may be set up to acknowledge different toxic gas alarm types. Instantaneous mode INST (INSTANT) sets the instrument to alarm as soon as threshold toxic gas level is reached.

TWA mode will cause the instrument to ignore temporary excursions above instantaneous alarm thresholds but to go into alarm instead when the SHORT TERM or LONG TERM exposure levels have been reached. ALL ACTIVE enables both TWA and instantaneous alarm types but allows the user to silence instantaneous alarms (see section 2, Operation).

### 'ZERO'

When this option is selected, the instrument will give the prompt 'ZERO ALL?' Only if you are sure that the instrument is in clean air and all sensors have settled down to a steady output should YES be pressed. The Triple Plus+/Plus+ IR then calculates offset correction and gain factors necessary to make toxic and flammable gas channels read zero and oxygen channels read 20.9%. Following a successful zeroing, there is the option to END the set up and return to monitoring, or to CONT to continue with setting up.

### PUMP

Turns the pump on and off. Options are GO and STOP.

### START

Selects functions to be enabled at start up (instrument switch on). Options are: *NOTHING*, *ZERO*, *LOG*, *ZERO & LOG*.

ZERO enables the option of zeroing the sensors at start, as per the zero all option above – the prompt to zero the sensor will appear several seconds after start up (to give the sensors time to settle) and will timeout (without performing a zero) if the YES button is not pressed within about 5 seconds.

LOG enables data logging at start up, and ZERO & LOG enables both zero and data logging at start up. Select NOTHING to disable zero and logging at start up.

## **BUTTN**

The left-hand button can be programmed to perform various functions when the instrument is in normal gas measurement mode. The options available are: *NOTHING, PUMP, PEAK, TWA TOXIC, AVERAGE, NORMAL*.

NOTHING means all special functions on the button are disabled.

PUMP allows the pump to be switched off and on without having to enter the menu system to perform this action.

PEAK, TWA TOXIC and AVERAGE are as per the DISPY functions. Pressing the button when one of these options is selected will toggle the display mode between that set on the button and that set in the DISPY setting.

NORMAL serves a similar function. If the DISPY mode has been set to something other than NORMAL then NORMAL allows the display mode to be toggled from that set in the DISPY option to the normal gas display. **Note:** these display functions have no effect if the DISPY mode is set to OFF, and that the instrument will always start up in the display mode set by the DISPY function. If the MUTE function is enabled then a SILENT ALARMS option will also appear as one of the possible selections in the BUTTN menu. This option allows the programmable button to toggle the MUTE feature between SILENT ALARMS and AUDIBLE ALARMS. Note that when SILENT ALARMS is selected no audible siren will sound when the instrument is in alarm, nor will the alarm light flash. There will be a visual indication of the alarm condition on the instrument's display. When the programmable button is pressed the instrument will issue a double bleep sound as an audible confirmation that a feature has been selected or de-selected.

## **FLAMM (Triple Plus+ only)**

This selects the flammable gas correction to be used for flammable (pellistor) sensors. It may be set to NO CORRECTION or to one of the gases defined in the flammable correction table. If a gas is selected, then this will change the name on the display and use the selected correction factor for pellistor sensor

modules. The exact list of gases and their corrections are configurable via a PC using *Portables PC* software. The default of gas correction factors for flammable gases with respect to methane and pentane are listed in Appendix 2.

Note: if no table has been downloaded into the instrument then no correction factor can be selected (the only option is NO CORRECTION).

## CALIB

When a calibration is being performed, replace the integral flow plate with the calibration flow plate so the gas is not being sampled by the pump.

This allows re-calibration of the instrument, which must first have been zeroed in clean air. You will need Triple Plus+/Plus+ IR aspirator and a supply of Crowcon calibration gas (see section 7 Maintenance and Calibration). The top line now displays one of the instrument's gas channels. This display will look like:

```
CALIBRATE: CH4 (chan. 1)
<<    >>    QUIT    CAL
```

Use the first two keys to select the required gas. Press QUIT to move back up a menu level, or CAL to select the gas to calibrate. The display will now change to:

```
CALIBRATE: CH4 = 0
UP    DOWN    QUIT    CAL
```

The actual gas reading is displayed on the top line, and should go up when the relevant TEST GAS is aspirated over the sensors. When the reading has stabilised use the UP and DOWN keys to make the reading match the known test gas concentration. Now press CAL to actually calibrate the instrument's gain. QUIT can be pressed to abandon the calibration. If the instrument is calibrated, it will either respond with CAL SUCCESSFUL or CAL FAILED. If the calibration failed the instrument's gain is not changed, and means that either the gas concentration was not equal to the value set (check both and repeat) or that the sensor has deteriorated with use (see section 7 Maintenance and Calibration for sensor replacement).

Note that when calibrating flammable sensors they will always appear in the CALIB menu as the sensor type they really are without any flammable correction factor applied. They should also be calibrated as per the gas they really are, and not as per the gas selected as a flammable correction factor. For example, if there is CH4 (methane) sensor in an instrument, and a flammable correction factor is applied so that the instrument reads PRO (propane) then the sensor would be selected as the CH4 (and not PRO) in the CALIB menu and methane used to calibrate the sensor.



**IMPORTANT SAFETY NOTICE:** All units fitted with sensors to measure both %LEL AND %Volume Methane, other hydrocarbons or “flammables”

To avoid potential damage to the pellistor sensor used for measuring % LEL methane when calibrating the IR or thermal conductivity sensor used for measuring % volume methane, the following precautions must be observed. Failure to follow this guidance may permanently damage the pellistor sensor, resulting in unsafe, erroneous readings and the need to replace the sensor. If the guidelines are followed the sensor should provide long and reliable service.

### Special Calibration Precautions

1. Perform a Zero on the unit in clean mobile air as normal.
2. Apply 2.5 % Volume Methane gas using the flow plate and calibrate the %LEL flammables sensor to either 50.0% LEL (areas covered by ISO10156) or 56.8% LEL (areas covered by ATEX / IEC 60079-29-2007).
3. Prepare to apply two samples of methane gas to the unit in quick succession: first 6% Volume Methane, and then 50% Volume Methane. Applying 6% Volume Methane will set the pellistor into save mode so it will not be damaged by applying higher volume levels of calibration gas.
4. Stop the flow of 6% Volume Methane and follow it within one or two seconds with 50% Volume Methane. Avoid the introduction of air, for example by using a three-way valve.
5. Calibrate the % volume flammables channel as normal and then turn off the gas supply. DO NOT purge the gas line with air.
6. Remove the flow plate and check that both flammables detectors return to zero reading.
7. For units calibrated with hydrocarbons other than methane the levels above should be scaled according to the relevant LEL levels.

### TIME

Selecting this will give a display of the form:

CURRENT TIME: 21:48:00

HOUR MINUTE QUIT

Press the key labelled HOUR to increment the hours and the key labelled MINUTE to increment the minutes until the correct current time is displayed

## OFF

Two options: OFF ENABLED, OFF DISABLED. Determines whether the instrument can be switched off.

## MUTE

If the mute function is enabled (which can only be done via *Portables PC*, see section 3.5. PC interface and software) then a MUTE option will appear within the menu system. This option can be selected as either SILENT ALARMS or AUDIBLE ALARMS. If SILENT ALARMS is selected then the word MUTED will flash on the main display with the gas units and name, no audible alarm will sound when an alarm is triggered, nor will the alarm LED will flash. There will be a visual indication of the alarm condition on the instrument's display. Note: this option will be ignored when the instrument's display mode is selected as OFF.

## LEVEL

This option displays and allows modification of alarm 1 for flammable LEL channels. Use the two keys labelled on the display as UP and DOWN to adjust this alarm level between to the required value.

**Note:** Crowcon does not generally recommend that alarm levels be set to a level that is less than 5% of the sensor's range because of the possibility of spurious alarms being triggered.

## LOG MENU

The LOG MENU acts similarly to the MENU system just described. Options are: *START* or *STOP*. One of these two options is displayed depending on the current state of the data logger. Press *START* to turn data logging on, and *STOP* to turn logging off.

## USER

Allows selection of a user name, which is used in the data log (see section 3.5). The act of changing the user is an event which is logged by the data logger.

## SITE

As user, but site location.

### 3.3 Quickcal

The instrument has the ability to perform a 'quick calibration' of four gas channels: CH<sub>4</sub>; CO; H<sub>2</sub>S and O<sub>2</sub> in 'one go'. The system prompts the user through the procedure. Before QuickCal is initiated, the instrument should have been zeroed. Now follow this procedure:

Press both of the middle 2 buttons, and hold them down for 5-7 seconds. The instrument will announce that the Quick Calibration has been initiated, and remind the user that the instrument should have been zeroed before this procedure is invoked.

The instrument will now alternately flash the gas concentrations it is expecting to be applied and the prompt CALIBRATE ALL INPUTS, with the two outer keys labelled with YES and NO. Pressing YES moves on in the QuickCal sequence, NO abandons the QuickCal and the instrument returns to the normal gas monitoring screen.

The instrument will now issue the prompt 'Is gas on sensors?' with the two outer keys labelled YES and NO as before. Ensure the correct test gas is applied to the instrument, and press YES. Pressing NO returns the instrument to the normal gas monitoring display.

If YES is pressed the display will change to SENSORS SETTLING, with a line of dots appearing on the bottom line of the display to indicate the instrument is working. The instrument will now wait until there appears to be a good steady flow of gas, and then the calibration will be performed. If the instrument perceives that the gas level is not steady then the message 'Gas not stable!' will be displayed and the calibration aborted.

If all channels are successfully calibrated the instrument will display the message 'Calibration successful', otherwise the message 'Calibration failed!' with the list of gases that failed the calibration displayed.

When performing a calibration with a gas from a pressurised source, the instrument's pump (if present) should always be turned off.

### 3.4 Pellistor saving (Triple Plus+ only)

To avoid the pellistor sensor being damaged by exposure to excessive levels of flammable gas, it is protected automatically. Pellistor saving may be triggered in two ways: On dual range flammable instruments (i.e. those with a pellistor measuring LEL and a thermal conductivity block measuring % volume) a percentage volume of gas may be specified at which the pellistor will be switched off. This percentage is configurable by computer using the *Portables PC* software, and is 5% by default (see below).

Additionally, a pellistor will switch itself off if it reaches a reading of 105% LEL or more – this action will happen irrespective of whether a % volume sensor is also fitted. If a pellistor switches itself off then it will stay off until it is manually switched on. This happens by pressing the unmarked button. The pellistor will warm up for 5 seconds before the pellistor channel will read.

Pellistor saving is indicated on the display by the gas level being blank for the flammable block.

## 3.5 Configuring The Instrument With Portables PC

The following configuration settings may ONLY be set via *Portables PC*. The function of these parameters is explained here. See the *Portables PC* documentation for details of how these parameters are accessed and modified. Note that *Portables PC* also allows the parameters configurable via the front panel to be configured via a PC.

**CONFIDENCE BLIP** The green LED will always flash once every three seconds. This option determines if an audible blip is also made.

**LOG PERIOD** Allows setting of the data logging period, anywhere from 1 second to 24 hours. See section on data logging for description.

**S.T.E.L. TIME** The short term exposure limit (S.T.E.L.) averaging period, set between 5 and 15 minutes. 15 minutes is the UK standard.

**SYSTEM TIME AND DATE** Instrument time and date.

**CALIBRATION DUE** Sets the date at which the Calibration due warning message will appear at instrument start up.

**USER AND SITE STRINGS** The actual text associated with the 10 user and site names may be set via *Portables PC*. The information, once set, appears in the log menu.

**VOLUME RANGE** Set the volume of gas used by flammable volume channels to turn off flammable (LEL) channels (for Autoranging units only).

**PASSWORD** Allows the menu password to be changed from the default of 1 2 3 4.

**CHANNEL NAME AND UNITS** This is the text used for the gas readings display. It may be set via *Portables PC*.

**FLAMMABLE CORRECTION DATA** The name associated with a correction fac-

tor, and the actual correction factor itself may be modified (Pellistor only).

**INSTANTANEOUS ALARM LEVELS** The gas level at which instantaneous alarms are triggered. This configuration data is available for all sensor channels with sensors having 3 rising alarm levels, except oxygen which has 2 falling and 1 rising alarm level.

**SHORT AND LONG TERM ALARM LEVELS** These parameters are only available for toxic channels, and set the level at which an exposure limit alarm will be triggered.

**ALARM MUTE** The mute function can be enabled. When this feature is enabled it is possible to access the MUTE parameter in the instrument's menu system and to mute alarms. Without enabling the Alarm Mute feature via *Portables PC* the MUTE function is not available.

**OVERRANGE OPTION** This selects the instrument's action when a sensor goes overrange. See section 2.3, Overrange.

**ZERO OPTION** By default, the ZERO option is in the passworded section of the configuration menu. It is possible to change the location of the ZERO option, and have it placed at the very top of the configuration system. If this is done, then pressing the CAL button will bring up the following list of options:

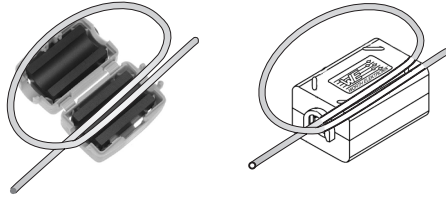
MENU EVENT LOG ZERO

**QUICKCAL GAS MIXTURE** The exact concentrations of gas in the multi-gas mixture being used with the quick calibration may be set here.

## IV. Battery Charging

**The new LIBRA Lithium-ion battery pack must be charged for a full 12 hours before first use. This will ensure the life of the new battery.**

A ferrite clamp is included with the Li-ion battery pack. Install the ferrite clamp to the D.C. charging lead as shown.



The new CROWCON battery pack consists of a rechargeable Lithium-ion battery pack. It has sufficient capacity to power the instrument for 12 hours with one flammable, one oxygen and two toxic gas sensors installed. Full recharge from flat is accomplished in 8 hours.

To use Triple Plus+/Plus+ IR CHARGER/INTERFACE, locate the complete instrument in the charger housing (sprung contacts ensure connection), and observe that the red power LED glows more brightly. An overnight charge is convenient to ensure usability every day.

**Note:** when the instrument is placed into a charger or charger/interface which is fitted with the new LIBRA lithium-ion battery pack the unit will turn off and start charging. If performing calibration or maintenance work, turn the instrument on when fitted into the charger or back on again if switched off when placed in the charger.

The Charger/Interface also allows communication between the instrument and a computer.

To use Triple Plus+/Plus+ IR CHARGING UNIT, locate the instrument (do not switch it on), in the charger housing and observe that the charging indicator LED glows. A discharged instrument will draw current at the standard rate, indicated by the LED glowing red. As the battery approaches full charge, the current drops to the trickle rate and the LED switches to green. An instrument may be left at the trickle charge rate indefinitely, or removed for use.

The chargers are supplied with a mains lead for connection to a 110-240 V, 50-60 Hz supply. Connect brown – live, blue – neutral, green/yellow – earth.

For DC charging (12-40 V), an optional lead is available incorporating a plug for a vehicle cigarette lighter socket. An optional interconnecting mains lead joins charger/interface units together for connection to a single outlet.

**If the instrument is to remain unused for a length of time, it should be charged prior to the period of storage.**

**Due to the safety circuitry included within the Lithium-ion battery pack, the battery will discharge when the unit is not in use. Always charge fully before use, or store on charge.**

---

## V. Data Logging

---

The data logging aspect of the instrument can be configured to be active when the instrument is switched on by the START menu option. Additionally, the instrument records events (such as alarms) and an event will cause the logger to be switched on.

Data is logged for all gas channels at a rate set by the log period, which is configurable via *Portables PC software*. For each channel, the maximum level (minimum in the case of oxygen) is recorded since the last reading was taken and stored in the log. Thus, even if the log period is set to 10 minutes (for example) and a brief gas hazard occurs, it will not be missed by the logger. Logged data is retained in battery-backed memory when the instrument is turned off. When the memory is filled, the new data over-writes the oldest.

A log is extracted from the instrument and saved as a file on the computer via the *Portables PC software* LogManager is then used to inspect the log. See the separate documentation for these two pieces of software for additional details.

The instrument notes the following events in the log along with a note of the channel the event is associated with (if appropriate):

- Log switched on – either from front panel or by event trigger
- Log switch off – either front panel or by instrument switch off
- Sensor channel overrange
- Instantaneous alarm 1
- Instantaneous alarm 2
- Instantaneous alarm 3
- Short term exposure alarm
- Long term exposure alarm
- User triggered event (from the instrument front panel)
- Change of user (from the front panel)
- Change of site (from the front panel)

The instrument is capable of storing just over 6300 data logs for all channels. Events take the space of 2 logs.



## VI. Troubleshooting Guide

SYMPTOM	DIAGNOSIS	REMEDY/CHECK
Does not switch on	Battery flat	Recharge battery
Does not switch off	OFF disabled	Alter configuration*
No audible tick	Tick disabled	Alter configuration*
Alarm signals, no gas	Alarm latched	Reset with UNMARKED button
Flashing red alarm, Sounder silent	INST toxic alarm accepted	Reset if possible, check configuration*
Gas reading, no gas	Zero drifted	Zero instrument*
Unstable/inaccurate reading	Sensor failed	Recalibrate or replace sensor*
Loading Defaults message on display screen	Back up battery is discharged	Recharge unit overnight switched on in charger, then re-configure and recalibrate.
Short life from Li-ion battery pack	Low voltage output from battery on start-up	Charge fully before use.

\*See *SETTING UP* or *CONFIGURING THE INSTRUMENT VIA PORTABLES PC*

\*\* see *MAINTENANCE AND CALIBRATION*

---

## VII. Maintenance and Calibration

---

Crowcon recommends monthly gas response checks and a recalibration interval of 6 months. Flammable sensors will respond to hydrogen and most hydrocarbons but will only be calibrated for a specific gas, typically methane.

**Note:** when the instrument is placed into a charger or charger/interface which is fitted with the new LIBRA lithium-ion battery pack the unit will turn off and start charging. If performing calibration or maintenance work, turn the instrument on when fitted into the charger or back on again if switched off when placed in the charger.

### 7.1 Recalibrating

Read about the 'CALIBRATE?' option in SETTING UP (CALIB) and the CALIBRATE functions in *Portables PC software* as either method may be used to adjust gain values, but a knowledge of both is helpful.

Zero the unit in clean air. Locate the aspirator flowhead under the ledge above the sensor panel and secure with the half-turn fasteners.

Starting with flammable gases and moving on to toxic, connect the appropriate cylinder of test gas to the inlet of the flow head via a flow meter. Direction of flow is marked on the flowhead. Adjust the control valve on the flow meter to achieve a flowrate of 0.5 litre/min.

Wait until the reading has stabilised on the Triple Plus+/Plus+ IR display before programming in the new level. Now shut off the valve and disconnect the supply of test gas. Aspirate fresh air through the flowhead using the rubber bulb until the reading has returned to zero. If there are signs of cross sensitivity between two or more sensors, wait for all readings to settle before proceeding with calibration of other channels.

For units with both %LEL (pellistor) and %Volume (flammable sensors) see note at end of 'CALIB' Section 3.2 (p13).

### 7.2 Replacing the Lead-Acid Battery Pack

To change the battery pack, ensure you are in a safe, non-hazardous area. Unscrew the tamperproof screws which retain the battery hatch using a 2 mm Hex. key. Remove the hatch and tip the battery pack out. Disconnect the spade terminals. When refitting, be sure to observe the correct polarity; red wire to positive, black to negative. Replace the battery pack and hatch and secure with the tamperproof screw. Crowcon recommends fitting the new Li-ion battery pack when replacing a lead-acid battery that has reached the end of its useful life. Alternative batteries, other than the Crowcon Li-ion battery pack, should not be used because they will invalidate approvals and may impair performance.

## 7.3 Fitting the Lithium-ion Battery Pack

*The Li-ion battery pack may be used with ATEX/IECEx certified instruments. Approval is pending for the use of the Li-ion battery pack with UL certified instruments.*

To change the Lead-acid battery pack to a Li-ion battery, ensure you are in a safe, non-hazardous area. Unscrew the tamperproof screws and remove the hatch and battery as in Section 7.2.

Remove the Li-ion pack from the box, connect the terminals as indicated on the new pack and place the bottom edge of the hatch into the base unit. Close the hatch and fasten the screws.

**N.B. ENSURE THE NEW PACK IS CHARGED FOR AT LEAST 12 HOURS PRIOR TO FIRST USE.**

## 7.4 Replacing a sensor module

Disconnect the battery pack. Unclip the shoulder strap and remove the two upper case fixings with a 3 mm Hex. key. Lift the lid assembly from the base and lay the instrument on its side, lid face down. Remove the two lower case fixings, and then two more next to the D-rings. Then split the halves, and lay them alongside the lid. All circuit boards should now be facing up.

Identify the sensor module to be replaced and disconnect the flexible pcb from it by lifting the shroud from the header and pulling gently on the tail. Remove the two Pozi-drive screws and the old sensor module.

Remove the old gasket/membrane assembly. Fit the new components accordingly to a reverse of the above procedure ensuring that the shroud is pushed home over the header to grip the flexible pcb tail securely. Fit the lower case shells together ensuring that the strap pins and captive nuts are located in the recesses of the side flanges, and that the gasket strip has not been displaced.

**WARNING:** if the nuts are slightly rotated and not sitting deep in the recesses, the case halves will be wedged apart allowing moisture to enter the instrument. Taking care not to trap any of the leads, push the lid back onto the base and secure with the fasteners. Reconnect the battery pack.

Triple Plus+/Plus+ IR sensor modules are supplied from the Crowcon factory and will identify themselves to the instrument when it is switched on. New sensor modules require calibration when fitted to a new instrument.

If any further maintenance is required, the instrument should be returned to Crowcon or a Crowcon Service Agent.

## 7.5 Back-up memory

Crowcon recommend that an instrument is turned on for at least 2 hours each month to retain back-up memory.

## VIII. Limitations of Use

	LONG TERM STORAGE LIMITS		OPERATING LIMITS	
	min	max	min	max
TEMPERATURE	0°C	20°C	-10°C	50°C
PRESSURE	900 mbar	1100 mbar	900 mbar	3 bar
HUMIDITY (non condensing)	15%RH	90%RH	20%RH	90%RH

INGRESS PROTECTION – IP65

## IX. Accessories and spares

### Accessories list

Description	Crowcon part number
Carrying case and belt	C01297
Aspirator probe (1 metre long)	C01097
Extra aspirator hose (to extend normal 2 metre length)	M04032
Aspirator and pouch	C01685
In-line filter and water-trap assembly	FIL29001
Computer interface lead 9 way	C01327
Charging lead for vehicle cigarette lighter socket	C01296
Baffle plate (to protect sensor apertures)	C01325
Charger 12-40VDC no power pack	C01546
Charger and UK 230V power pack	C01547
Charger and EU 230V power pack	C01548
Charger and US 110V power pack	C01549
Charger Interface II - UK	C01436
Charger Interface II - USA	C01437
Charger Interface II - Europe	C01438
Portables PC Software CD	C01832

### Spares list

General Spares	
Membrane switch protector (sheet of 2)	M05809
Carrying strap	C01323
Main PCB English	S011298/E
Main PCB French	S011298/F
Main PCB Dutch	S011298/D
Safety component PCB	S011301/3
Sounder	S011300
Lithium-ion battery pack (for ATEX/IECEx approved units built after February 2010)	C01006
Spare lithium-ion battery pack (For ATEX/IECEx units built before February 2010)	C01007

#### Triple Plus+ only

##### Sensor assemblies:

0– 100% LEL methane/flammable	S011375/AA
0– 100% vol methane	S01423
0– 50 ppm hydrogen sulphide	S01240
0– 500 ppm carbon monoxide	S01241
0– 10 ppm sulphur dioxide	S01242
0– 5 ppm chlorine*	S01243
0– 10 ppm nitrogen dioxide*	S01244

0– 100 ppm nitric oxide	S01245
0– 25% vol oxygen	S011371
0– 10ppm hydrogen chloride*	S01724
0– 25ppm hydrogen cyanide	S01725
0– 50ppm ammonia	S01726
0– 2000ppm hydrogen	S01250
0– 2ppm phosphine	S01252
0– 100ppm volatile organics**	S011367
0– 10ppm ethylene oxide	S011366
0– 10ppm hydrogen fluoride	S01832

### Triple Plus+ IR only

#### Sensor assemblies:

Sensor Module Methane 0–100% LEL (UK)	S011316/U
Sensor Module Methane 0–100% LEL (ATEX)	S011316/A
Sensor Module Methane Dual Range 0–100% LEL & 0–100% Volume (ATEX)	S011317/A
Sensor Module Propane 0–100% LEL	S011318
Sensor Module Propane Dual Range 0–100% LEL & 0–100% Volume	S011319
Sensor Module Butane 0–100% LEL	S011320
Sensor Module Butane Dual Range 0–100% LEL & 0–100% Volume	S011321
Sensor Module Ethylene 0–100% LEL	S011322
Sensor Module Ethylene Dual Range 0–100% LEL & 0–100% Volume	S011323
Sensor Module Acetylene 0-100% LEL	S011790
Sensor Module Acetylene Dual Range 0-100% LEL & 0-100% Volume	S011792
Triple Plus+ IR Membrane Switch Assembly	E01823

Note: IR sensors should not be fitted in and will not be recognised by standard Triple Plus+ units.

For additional spares please contact Crowcon

\*Readily absorbed gases – they will not be detected if an aspirator or hose are used and are unsuitable for use in pumped instruments.

\*\*This broad range sensor has a high level of cross sensitivity and it can be used to monitor many gases.

For additional spares please contact Crowcon

---

## Appendix 1 – Pumped version (optional)

---

The internal pump, when used in conjunction with the external aspirator flow head and sampling tube, enables the Triple Plus+/Plus+ IR to monitor inaccessible atmospheres. It offers a consistent flowrate and is not fatigued, unlike the manual hand bulb.

The pump mode may be defined within the calibration menu to be either pump GO or STOP. This enables the instrument to be used in either pumped or diffusion monitoring mode. See the SETTING UP section above for details on how this can be configured. Additionally, it is possible to control the pump via the programmable button as described in section 3.2, Configuration Options.

If the STOP pump mode is selected the pump will not run, and the aspirator flow head and tubing must be removed to enable gas to enter the sensors by diffusion.

If the GO pump mode is selected the pump will now run and the aspirator flow head should now be fitted. Ensure that flexible tubing connects between the pump inlet nozzle on the side of the instrument and the outlet ('BULB' side) of the flow plate. The sample tube should be connected to the 'INLET' side of the flowhead.

The pump mode is remembered while the instrument is switched off.

On increasing the length of the sample tube, the response time will be affected and some gases may be absorbed, e.g. chlorine. Add approximately 1.5 seconds per metre of sample tube for gas to reach the instrument (4 mm I.D. tube). Be careful not to suck water or dust into the instrument, and avoid kinking the sample tube. If the flow is blocked for any reason, the pump is automatically stopped, and the warning message 'PUMP FLOW FAIL' appears on the display. Attend to the blockage and then restart the pump by pressing the right hand button. (The Crowcon Water Trap may be used when there is the danger of water ingress). The pump draws power from the Triple Plus+/Plus+ IR battery pack and so reduces the operating time between recharge. With one flammable sensor installed, the battery life will be around 9 hours, compared to 12 hours without the pump running.

When the instrument is being calibrated from a pressurised gas source, the pump should always be switched off.

**Please note: Pumped units will drain batteries faster than those without, or those with pumps that are not used continuously.**

## Appendix 2 – Default Flammable Correction Factors

This information is for the Triple Plus+ model ONLY

Gas	Correction with respect to methane	Correction with respect to pentane	3 character name
Pentane	2.0	1.0	PEN
Methane	1.0	0.5	CH4
Butane	1.7	0.9	BUT
Propane	1.4	0.7	PRO
Hydrogen	0.9	0.5	H2
Toluene	2.7	1.4	TOL
Ethanol	1.6	0.8	ETH
Petrol Vapour	2.5	1.3	PET
Ammonia	0.7	0.4	NH3
Methanol	1.3	0.7	MTL
LPG	1.4	0.7	LPG
Propanol	2.0	1.0	PRL

Note that these correction factors apply to VQ32 pellistor sensor modules. The factors only apply to the Triple Plus+ and may differ if an alternate sensor module is fitted to the instrument.



---

## Appendix 3 – Front Panel Text Items

---

This Appendix lists all the possible values the front-panel configuration parameters may take.

**Top level** configuration items – accessible by pressing the CAL button:

Text	Description
MENU	Enter configuration menu, passworded
LOG	Enter data logging menu
ZERO*	Zero all channels
EVENT	Mark event in the data log

*\*Only present at this level if so selected via Portables PC.*

**MENU** level configuration items:

Text	Description/Options
ALARM	Select alarm mode: INSTANT, ALL ACTIVE, TWA ONLY
BUTTN	Select programmable button function: NOTHING, NORMAL, AVERAGE, TWA TOXIC, PEAK HOLD, PUMP, SILENT ALARMS
CALIB	Calibrate selected channel
DISPY	Select display mode: NORMAL, AVERAGE, OFF, TWA TOXIC, PEAK HOLD
FLAMM	Select flammable correction factor: NO CORRECTION, ...
LEVEL	Allows setting of flammable alarm 1, 1% L.E.L. and alarm 2 level
LIGHT	Select backlight timeout: ALWAYS ON, NO TIMEOUT, 10, 20 or 30 MINUTE TIMEOUT
MUTE	Select SILENT ALARMS or AUDIBLE ALARMS
OFF	Select instrument switch off mode :OFF ENABLED, OFF DISABLED
PUMP	Pump on or off: GO, STOP
START	Start up options: NOTHING, LOG, ZERO, ZERO & LOG
TIME	Allows edit of instrument time (hours and minutes)
ZERO*	Zero all channels

*\*Only if not selected to be at the higher level (via Portables PC).*

*\*\*Only if MUTE function enabled (via Portables PC).*

**LOG** level configuration items:

Text      Description/Options

START\*    Start data logging

STOP\*\*    Stop data logging

SITE      Select site: Site 1, Site 2, ..... Or string programmed via *Portables PC*

USER      Select user: User 1, User 2, ...Or string programmed via *Portables PC*

*\*This option is only present if the logger is currently stopped.*

*\*\*This option is only present if the logger is currently on.*

---

## Appendix 4 – Sensor Limitations

---

The instrument is not suitable for use in ambient temperatures above 50°C and electrochemical toxic gas sensors may be degraded at these temperatures.

Water should not be allowed to collect on the sensors as this may impede gas diffusion. Use with care in wet or humid environments where water may condense on the sensors, and check response after use.

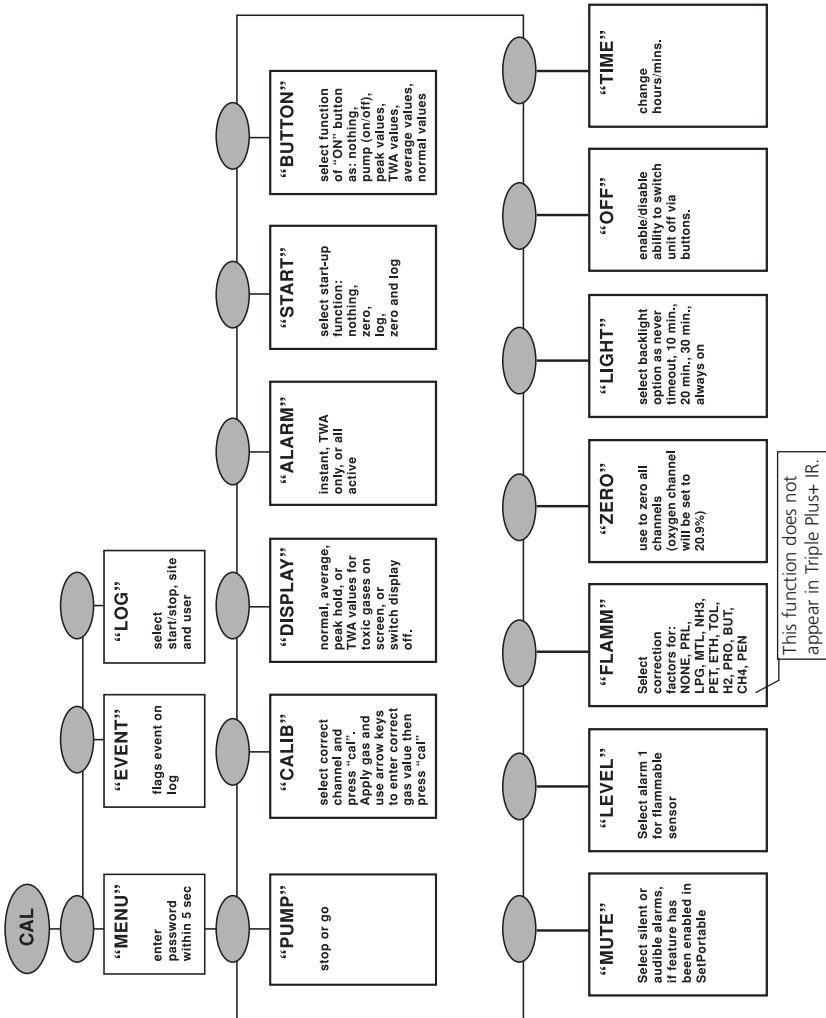
Persistent exposure to high levels of toxic gas can shorten the life of toxic sensors. Toxic sensors may also be cross-sensitive to gases other than their specific target gas, and hence the presence of other gases may cause the sensor to respond. If unsure, contact Crowcon or your local agent.

Use of high power radio transmitters in close proximity to the instrument may exceed RFI immunity levels and cause erroneous indications. If such problems are experienced, remove antennae to a reasonable distance from the instrument (e.g. 30 cm).

Standard Triple Plus+ units detect flammable gases using a catalytic flammable sensor which operates in the presence of oxygen. It is advisable to check the oxygen concentration as well as the flammable gas concentration before entering a confined space. Oxygen levels below 10% will reduce a flammable gas reading.

The performance of catalytic sensors may be permanently degraded if exposed to silicones, sulphur containing gases (such as H<sub>2</sub>S), lead or chlorine compounds(including chlorinated hydrocarbons).

# Appendix 5 - Menu Map









A HALMA COMPANY



**UK Office**

Crowcon Detection Instruments Ltd  
2 Blacklands Way,  
Abingdon Business Park  
Abingdon  
Oxfordshire OX14 1DY  
United Kingdom  
Tel: +44 (0)1235 557700  
Fax: +44 (0)1235 557749  
Email: sales@crowcon.com  
Web site: www.crowcon.com

**Rotterdam Office**

Crowcon Detection Instruments Ltd  
Vlambloem 129  
3068JG, Rotterdam  
Netherlands  
Tel: +31 10 421 1232  
Fax: +31 10 421 0542  
Email: eu@crowcon.com  
Web site: www.crowcon.com

**USA Office**

Crowcon Detection Instruments Ltd  
21 Kenton Lands Road,  
Erlanger,  
Kentucky 41018-1845  
USA  
Tel: +1 859 957 1039 or  
1-800-527 6926  
1-800-5-CROWCON  
Fax: +1 859 957 1044  
Email: salesusa@crowcon.com  
Web site: www.crowcon.com

**Singapore Office**

Crowcon Detection Instruments Ltd  
Block 194, Pandan Loop  
#06-20 Pantech Industrial Complex  
Singapore 128383  
Tel: +65 6745 2936  
Fax: +65 6745 0467  
Email: sales@crowcon.com.sg  
Web site: www.crowcon.com